

Method A - Application Guide

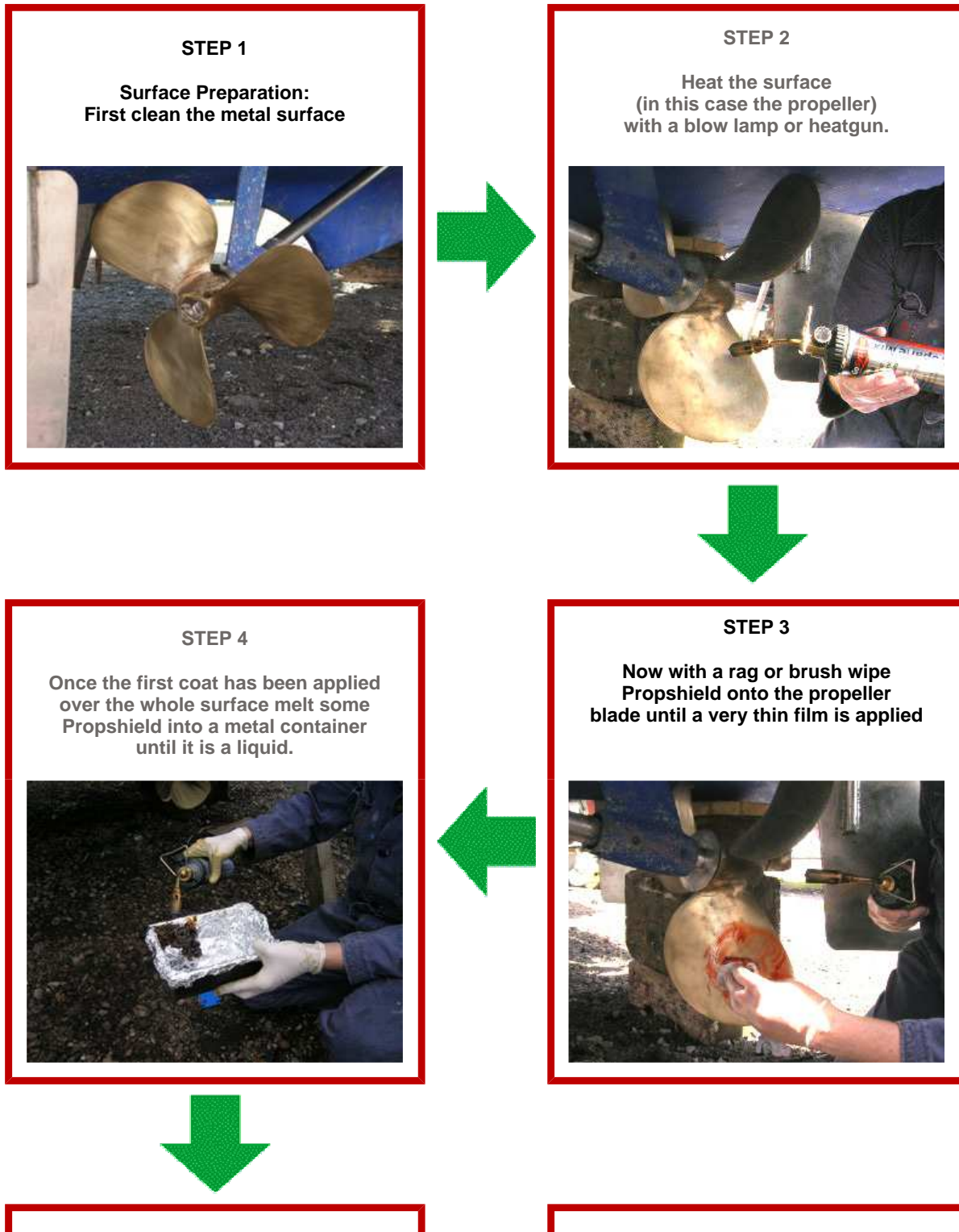
[< BACK](#)

Suitable for all metal surfaces including bronze, stainless steel and aluminium and is applied using heat as a penetration catalyst (Note that more detailed written instructions for both methods are included with your Propshield purchase along with further detailed precautions). Further application photos can be seen [here](#).

WARNINGS:

- 1) Do not use Method A on painted surfaces, i.e. outdrive legs and outboards however you can use either method on your outdrive/outboard propellers if the blades are bare metal.
- 2) Do not overheat outdrive/outboard props as the rubber insert/seals in some designs of prop hub can be damaged. If unsure check with the manufacturer of your outdrive or outboard motor.

The below example/guide shows Propshield being applied to a bronze propeller.



STEP 5

Now dip a rag or brush into the liquid Propshield and apply a thicker coat to the blades



STEP 6

The job is now completed and the vessel is ready to launch.



[HOME](#)