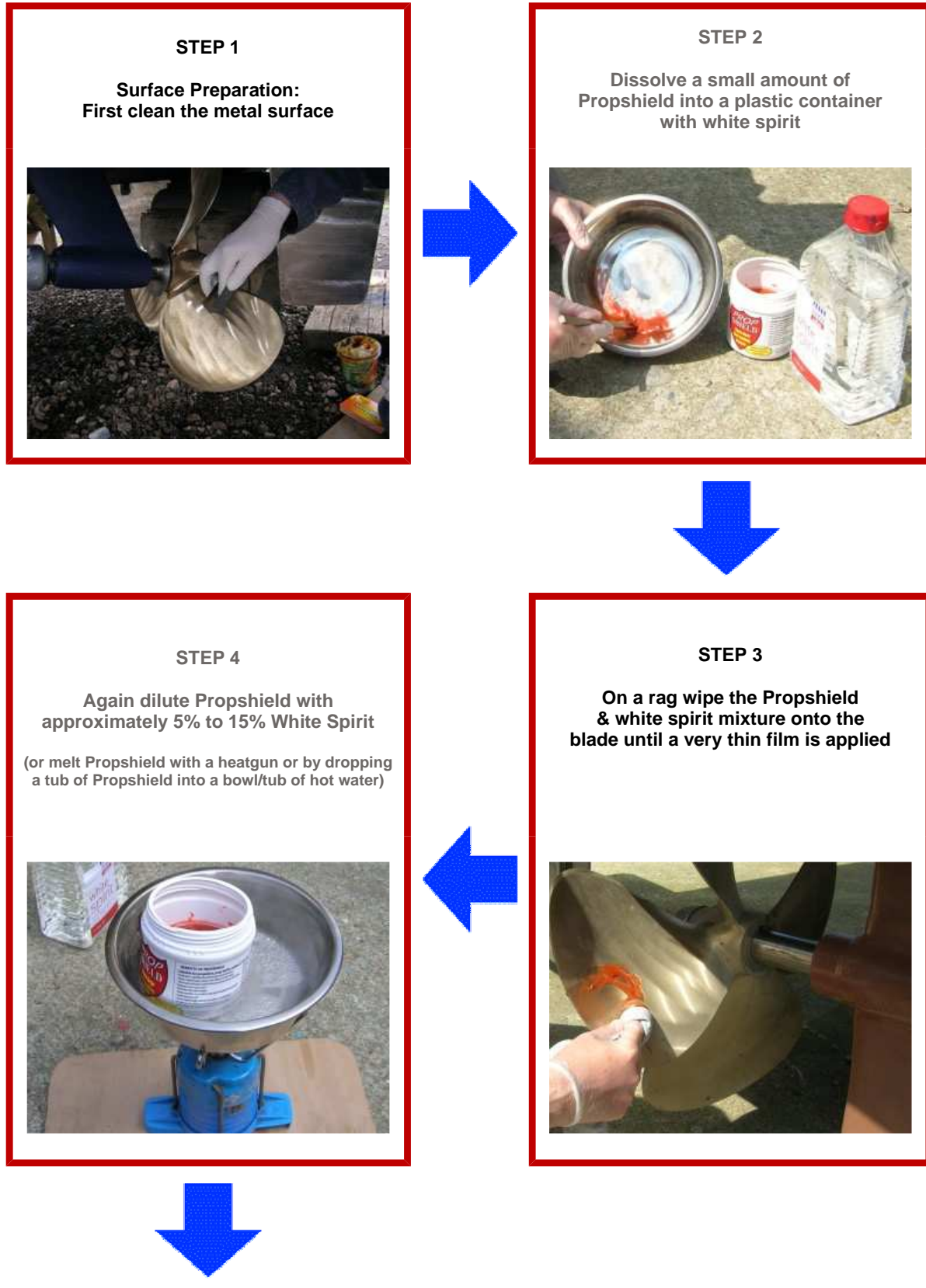


Method B - Application Guide

[< BACK](#)

Suitable for painted surfaces as well as all metal surfaces and is applied using white spirit as a penetration catalyst (Note that more detailed written instructions for both methods are included with your Propshield purchase along with further detailed precautions). Further application photos can be seen [here](#).

The below example/guide shows Propshield being applied to a bronze propeller.



STEP 5

Now apply a second thicker coat; dip a rag into the liquid Propshield and apply a thicker coat to the blades



STEP 6

The job is now completed and the vessel is ready to launch.

